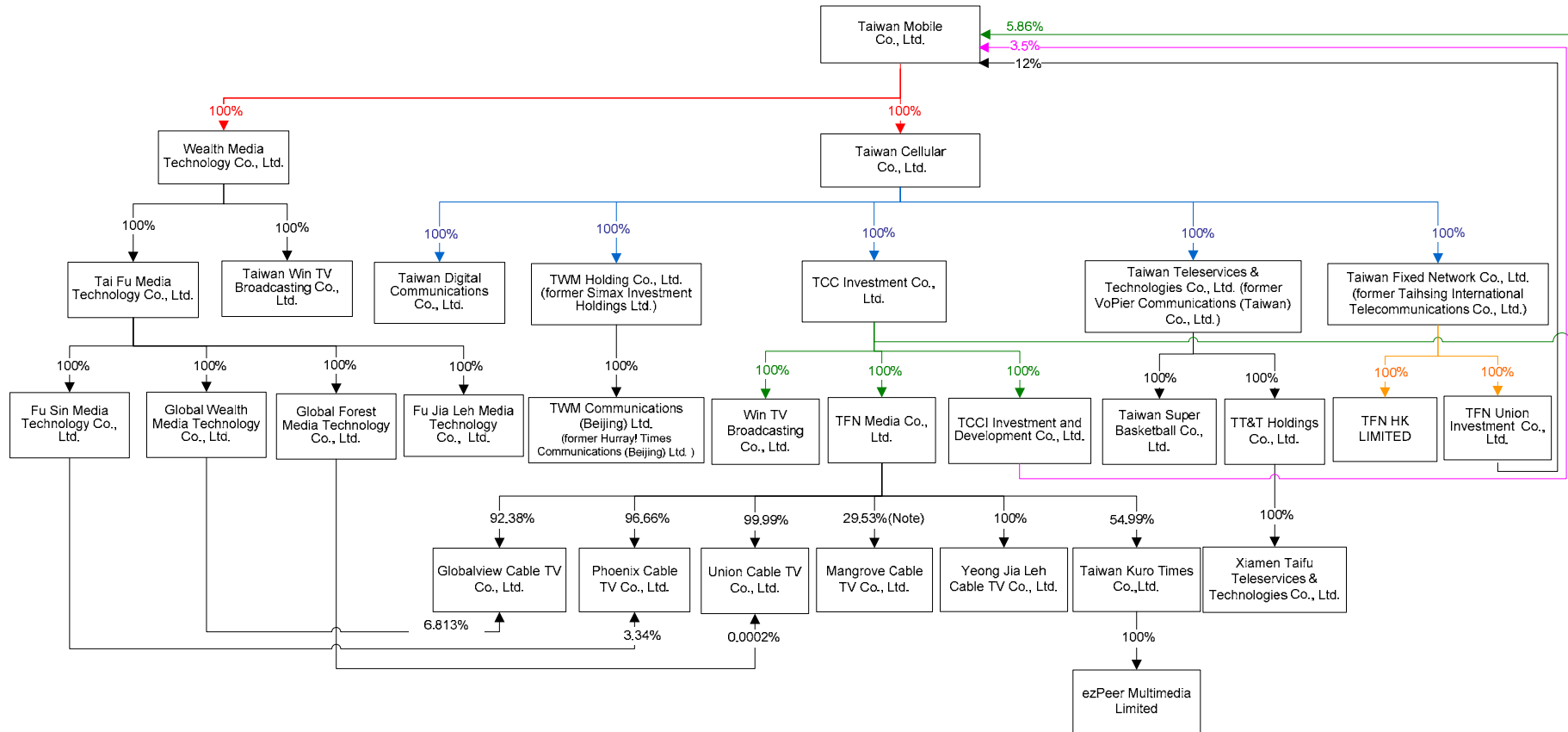


Chapter 7. Special Notes

Affiliates

1. Investment holding structure

As of December 31, 2010



Note: 70.47% of shares are held under trustee accounts.

2. Affiliates' profile

Unit: NT\$'000 (unless otherwise stated)

Name	Date of incorporation	Address	Paid-in capital	Main business
Wealth Media Technology Co., Ltd.	2007.08.07	13F-1, No. 172-1, Jilong Rd., Sec. 2, Taipei	372,000	Investment
Tai Fu Media Technology Co., Ltd.	2007.10.18	13F-1, No. 172-1, Jilong Rd., Sec. 2, Taipei	270,000	Investment
Global Wealth Media Technology Co., Ltd.	2007.10.26	1F, No. 206, Datong Rd., Sec. 2, Xizhi District, New Taipei City	84,000	Investment
Fu Jia Leh Media Technology Co., Ltd.	2007.11.23	13F-1, No. 172-1, Jilong Rd., Sec. 2, Taipei	1,000	Investment
Fu Sin Media Technology Co., Ltd.	2007.11.23	13F-1, No. 172-1, Jilong Rd., Sec. 2, Taipei	135,000	Investment
Global Forest Media Technology Co., Ltd.	2008.12.26	13F-1, No. 172-1, Jilong Rd., Sec. 2, Taipei	1,000	Investment
Taiwan Cellular Co., Ltd.	2005.09.20	13F-1, No. 172-1, Jilong Rd., Sec. 2, Taipei	300,000	Telecom engineering and IT services
Taiwan Fixed Network Co., Ltd.	2007.01.30	13F-1, No. 172-1, Jilong Rd., Sec. 2, Taipei	21,000,000	Fixed-line service provider
Taiwan Digital Communications Co., Ltd.	2007.06.06	13F-1, No. 172-1, Jilong Rd., Sec. 2, Taipei	12,000	Telecom engineering and IT service
TCC Investment Co., Ltd.	2009.08.10	13F-1, No. 172-1, Jilong Rd., Sec. 2, Taipei	39,500	Investment
TCCI Investment and Development Co., Ltd.	2009.09.22	13F-1, No. 172-1, Jilong Rd., Sec. 2, Taipei	4,000	Investment
Taiwan Win TV Broadcasting Co., Ltd.	2010.04.14	13F-1, No. 172-1, Jilong Rd., Sec. 2, Taipei	160	Entertainment
Win TV Broadcasting Co., Ltd.	2005.10.17	9F, No. 206, Dunhua S. Rd., Sec. 2, Daan District, Taipei	181,774	TV program provider
TFN Media Co., Ltd.	2005.01.25	6F, No. 206, Dunhua S. Rd., Sec. 2, Daan District, Taipei	2,305,263	Cable broadband and value-added services provider
Union Cable TV Co., Ltd.	2005.02.04	Nos. 28-23, Xiaoshe Lane, Donggang Rd., Yilan City, Yilan County	1,704,633	Cable TV service provider
Yeong Jia Leh Cable TV Co., Ltd.	1994.09.26	10F, No. 651-5, Zhongsheng Rd., Xinzhuang District, New Taipei City	339,400	Cable TV service provider

Name	Date of incorporation	Address	Paid-in capital	Main business
Mangrove Cable TV Co., Ltd.	1996.01.23	5F, No. 33, Lane 3, Zhongzheng E. Rd., Sec. 1, Danshui District, New Taipei City	211,600	Cable TV service provider
Phoenix Cable TV Co., Ltd.	1996.08.22	No. 312, Fongping 1st Rd., Daliao Township, Greater Kaohsiung	680,902	Cable TV service provider
Globalview Cable TV Co., Ltd.	1995.11.25	No. 206, Datong Rd., Sec. 2, Xizhi District, New Taipei City	560,000	Cable TV service provider
TWM Holding Co., Ltd.	2006.06.09	c/o Arias, Fabrega & Fabrega Trust Co., BVI Ltd., 325 Waterfront Drive, Road Town, Tortola, British Virgin Islands	US\$1 (Note)	Investment
TWM Communications (Beijing) Ltd.	2002.09.17	Room B05B, B Floor, Tong Heng Building, No. 4 Garden Road, Haidian District, Beijing, China	US\$3,000,000 (Note)	Mobile application development and design
Taiwan Teleservices & Technologies Co., Ltd.	2001.06.08	13F-1, No. 172-1, Jilong Rd., Sec. 2, Taipei	10,000	Call center service
Taiwan Super Basketball Co., Ltd.	2007.09.21	15F-1, No. 172-1, Jilong Rd., Sec. 2, Taipei	20,000	Basketball team management
TT&T Holdings Co., Ltd.	2004.10.08	TrustNet Chambers, P.O. Box 1225, Apia, Samoa	US\$1,300,000 (Note)	Investment
Xiamen Taifu Teleservices & Technologies Co., Ltd.	2005.04.05	3F-B, No.2, Xiamen Software Park, Xiamen City, China	US\$1,300,000 (Note)	Call center service
TFN HK Ltd.	2003.05.14	Unit 507, 5/F, Tower 1, Silvercord, 30 Canton Road, Tsimshatsui, Kowloon, Hong Kong	HK\$1,300,000 (Note)	Telecommunications service provider
TFN Union Investment Co., Ltd.	2009.09.22	13F-1, No. 172-1, Jilong Rd., Sec. 2, Taipei	4,000	Investment
Taiwan Kuro Times Co., Ltd.	2009.02.11	6F, No. 100, Civic Boulevard, Sec. 4, Daan District, Taipei	12,137	Online music platform
Ezpeer Multimedia Ltd.	2010.01.18	Chambers P.O. Box 217, Apia Samoa	US\$ 1,522,464 (Note)	Investment

Note : Exchange rate of US\$1=NT\$30.217 and HK\$=NT\$3.743 as of December 31, 2010.

3. Affiliates' operating highlights

Unit: NT\$'000

Company Name	Paid-in capital	Total assets	Total liabilities	Net worth	Operating revenue	Operating income	Net income	EPS (NT\$)
Wealth Media Technology Co., Ltd.	372,000	302,078	101	301,977	-	(278)	9,491	0.30
Tai Fu Media Technology Co., Ltd.	270,000	233,908	33,139	200,769	-	(159)	9,721	0.36
Global Wealth Media Technology Co., Ltd.	84,000	94,008	4,071	89,937	-	(173)	5,174	0.62
Fu Jia Leh Media Technology Co., Ltd.	1,000	822	55	767	-	(210)	(201)	(2.01)
Fu Sin Media Technology Co., Ltd.	135,000	141,352	73	141,279	-	(132)	5,398	0.40
Global Forest Media Technology Co., Ltd.	1,000	693	50	643	-	(157)	(138)	(1.38)
Taiwan Win TV Broadcasting Co., Ltd.	160	9,955	43	9,912	-	(96)	(88)	(5.50)
Taiwan Cellular Co., Ltd.	300,000	67,207,312	8,406,935	58,800,377	-	(1,118)	3,678,672	122.62
Taiwan Fixed Network Co., Ltd.	21,000,000	46,963,226	8,676,629	38,286,597	10,253,446	2,295,441	2,054,662	0.98
Taiwan Digital Communications Co., Ltd.	12,000	54,947	43,343	11,604	47,489	666	654	0.55
TCC Investment Co., Ltd.	39,500	27,821,066	1,519,900	26,301,166	1,618,858	1,604,215	1,608,730	560.37
TCCI Investment and Development Co., Ltd.	4,000	9,259,553	263,114	8,996,439	-	(17)	(17)	(0.04)
Win TV Broadcasting Co., Ltd.	181,774	555,329	287,137	268,192	902,814	83,782	79,122	4.35
TFN Media Co., Ltd.	2,305,263	12,567,361	8,206,522	4,360,839	2,706,404	1,342,216	1,676,454	7.27
Union Cable TV Co., Ltd.	1,704,633	2,113,916	246,589	1,867,327	627,104	150,763	132,143	0.78
Yeong JiaLeh Cable TV Co., Ltd.	339,400	961,026	370,785	590,241	1,113,117	236,618	147,207	4.34
Mangrove Cable TV Co., Ltd.	211,600	494,734	163,307	331,427	442,877	118,735	92,740	4.38
Phoenix Cable TV Co., Ltd.	680,902	1,188,399	225,406	962,993	1,149,376	238,896	168,255	2.47
Globalview Cable TV Co., Ltd.	560,000	850,607	178,929	671,678	488,861	102,845	80,477	1.44
TWM Holding Co., Ltd.	0.030	259,175	59	259,116	-	(88)	2,090	2,089,625
TWM Communications (Beijing) Ltd.	90,651	110,112	15,306	94,806	79,132	5,226	1,962	NA
Taiwan Teleservices & Technologies Co., Ltd.	10,000	400,211	319,264	80,947	982,755	61,118	40,966	40.97

Taiwan Super Basketball Co., Ltd.	20,000	26,663	6,580	20,083	35,231	24	73	0.04
TT&T Holdings Co., Ltd.	39,282	50,440	8,659	41,781	85,425	(1,384)	(2,154)	(1.66)
Xiamen Taifu Teleservices & Technologies Co., Ltd.	39,282	50,121	9,140	40,981	72,571	3,280	(2,808)	NA
TFN HK Ltd.	4,866	35,058	29,954	5,104	53,110	2,293	2,264	1.74
TFN Union Investment Co., Ltd.	4,000	31,803,745	903,537	30,900,208	-	(17)	(17)	(0.04)
Taiwan Kuro Times Co., Ltd.	12,137	110,547	56,766	53,781	134,212	(14,983)	(15,719)	(17.42)
Ezpeer Multimedia Ltd.	46,004	45,196	-	45,196	-	(847)	(847)	NA

Note : Exchange rate of US\$1=NT\$30.217, HK\$=NT\$3.743 and RMB1= NT\$4.563 as of December 31

Average rate of US\$1=NT\$31.6553, HK\$=NT\$4.0591 and RMB1= NT\$4.676

Private placement of company shares: None

TWM shares held / sold by subsidiaries

Unit : NT\$ '000

Subsidiary	TCC Investment Co., Ltd. (TCCI merged TFN Investment Co., Ltd.)		TFN Union Investment Co., Ltd.(TUI)		TCCI Investment and Development Co., Ltd. (TID)	
	December 2010	As of Jan 31, 2011	December 2010	As of Jan 31, 2011	December 2010	As of Jan 31, 2011
Paid-in capital	39,500		4,000		4,000	
Source of funding	Equity		TFN established TUI with the shares of the Company		TFNI established TID with the shares of the Company	
% owned by the Company	100%		100%		100%	
Acquisition / disposal date	December 2010	As of Jan 31, 2011	December 2010	As of Jan 31, 2011	December 2010	As of Jan 31, 2011
No. of shares acquired and payment costs	-	-	-	-	-	-
No. of shares sold and proceeds	-	-	-	-	-	-
Investment income	-	-	-	-	-	-
Ending balance: Total No. of shares and value (Note 1)	222,774,179 shares NT\$12,386,244	222,774,179 shares NT\$12,386,244	456,294,760 shares NT\$22,769,109	456,294,760 shares NT\$22,769,109	132,848,672 shares NT\$6,629,149	132,848,672 shares NT\$6,629,149
Pledges	None	None	None	None	None	None
Guarantees / endorsements provided by the Company	-	-	-	-	-	-
Financing provided by the Company	-	-	-	-	-	-

Note 1: Ending balance is carrying cost and does not include evaluation gains/losses.

Other supplementary information: None

Other significant events affecting shareholders' equity or stock price: None